



NOAA Corps 101

Military Interstate Children's Compact Commission
Annual Business Meeting October 23, 2019

Captain Devin Brakob, NOAA
Director, NOAA Corps Commissioned Personnel Center



History at a Glance

- U.S. Survey of the Coast (1807 - 1836)
- U.S. Coast Survey (1836 – 1878)
- U.S. Coast and Geodetic Survey (1878 – 1917)
- U.S. Coast and Geodetic Survey Corps (1917 – 1965)
- U.S. Environmental Science Services Administration
Commissioned Officer Corps (ESSA Corps) (1965 – 1970)
- National Oceanic and Atmospheric Administration
Commissioned Officer Corps (NOAA Corps) (1970 – present)



- Civil War
- Spanish-American War
- World War I
- World War II



THE USS *PATHFINDER* (AGS-1)
This is a Coast and Geodetic Survey vessel requisitioned for wartime surveys by the Navy.





NOAA Corps Basics



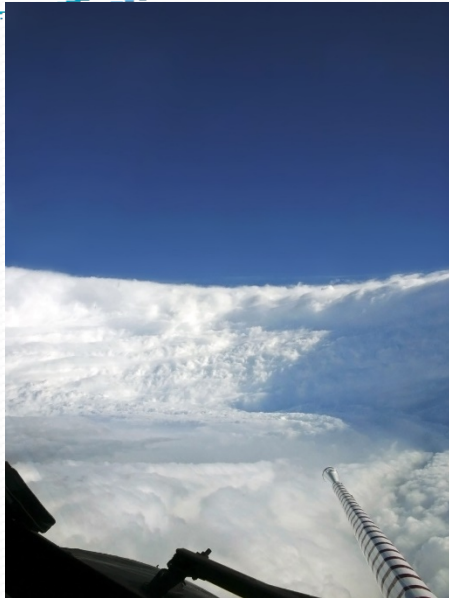
- Uniformed Service
- 321 Commissioned Officers
- 3 Flag Officers
- STEM Background
- 100% Operational
- Leaders at and under the sea, in the air, and ashore



- Two Lockheed WP-3D Orions
- One Gulfstream IV-SP
- One Beechcraft King Air 350CR
- Four De Havilland DHC-6 Twin Otters
- One Gulfstream AC-695 Turbo Commander





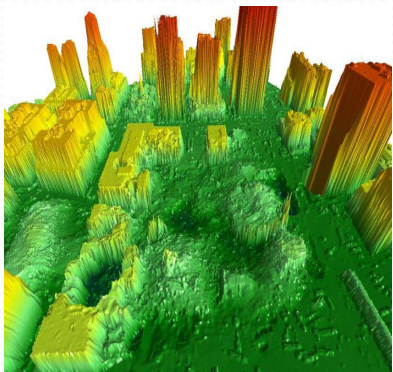


Hurricane Surveillance and Research – In October 2016, NOAA’s WP-3D (N43RF) and G-IV (N49RF) conducted 21 operational missions in seven days into Hurricane Matthew gathering vital data used to improve hurricane track and intensity forecasts. NOAA’s King Air (N68RF) flew 14 missions to collect post-storm damage and flooding imagery from Florida to Virginia in coordination with FEMA.

Atmospheric Research – In 2016, NOAA responded to El Niño in the tropical Pacific. In conjunction with the NASA Global Hawk UAS and NOAA Ship *Ronald H. Brown*, NOAA’s G-IV aircraft (N49RF) provided an observational foundation to better understand and predict how tropical conditions related to El Niño contribute to the development and evolution of winter storms affecting the eastern north Pacific and western US.



Water Resources – In 2016, a record number of hours was flown supporting the snow survey mission, including collecting the first operational data from the state of California. Mission safety was increased by automating the acquisition of Gamma data. This mission provided data critical to river, flood, and water supply forecasting.



Emergency Response – In addition to Hurricane Matthew post-storm damage assessment surveys, NOAA’s King Air (N68RF) conducted emergency response missions to large scale flooding events in the Midwest (January) and Louisiana (August), providing critical information to emergency response managers.

<https://youtu.be/MGSnrvquK6c>

- *Ronald H. Brown*
- *Okeanos Explorer*
- *Bell M. Shimada*
- *Henry B. Bigelow*
- *Reuben Lasker*
- *Oscar Dyson*
- *Pisces*
- *Fairweather*
- *Rainier*
- *Thomas Jefferson*
- *Ferdinand R. Hassler*
- *Gordon Gunter*
- *Hi'ialakai*
- *Nancy Foster*
- *Oregon II*
- *Oscar Elton Sette*





Ship Missions



Fisheries Stock Assessments - NOAA ships conduct stock assessments that assist in the management of commercially important fisheries species. East Coast Bottom Trawl Surveys (NOAA Ship *Henry B. Bigelow*) and Alaskan Pollock Surveys (NOAA Ship *Oscar Dyson*) have been conducted for many years and this historical data is important for monitoring trends in fisheries population and managing them at a sustainable level.



Exploration and Mapping in the Western and Central Pacific - NOAA Ship *Okeanos Explorer* mapped over 150,000 square km during 2015 and 2016. Their multiyear CAPSTONE (Campaign to Address Pacific monument Science, Technology, and Ocean Needs) project provides a biological baseline to support scientific and management decisions around U.S. marine protected areas in remote Pacific areas.

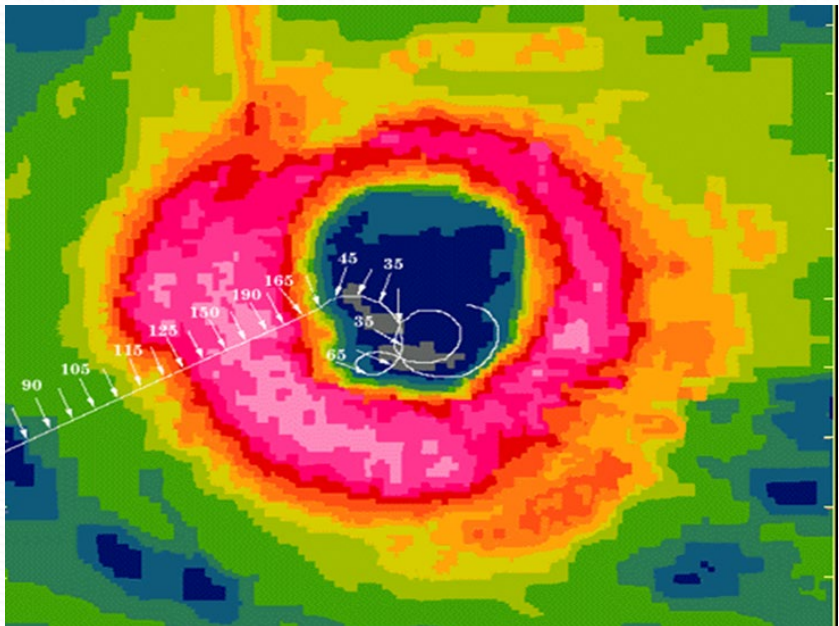
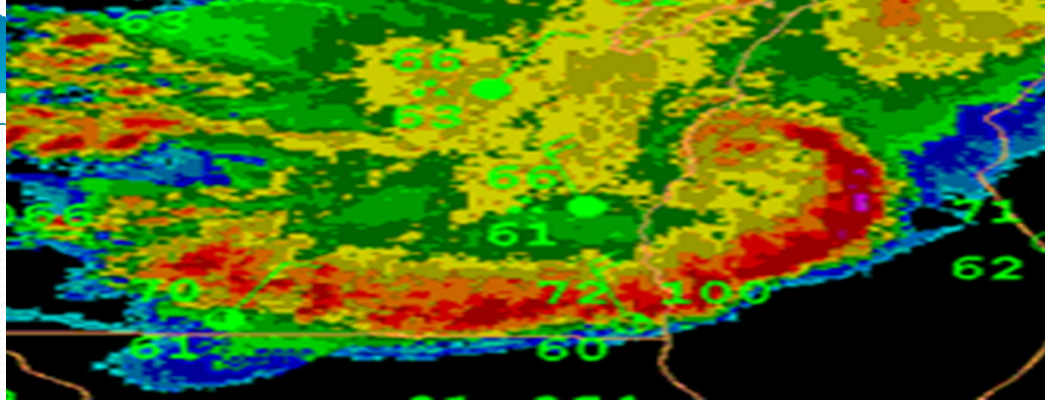


Regional Hydrographic Surveys - NOAA Ships *Fairweather* and *Rainier* continue to conduct hydrographic surveys in Alaskan waters, which will result in much needed updates to charts in an area that is seeing more commercial traffic than ever before. Rapid response by NOAA Ship *Ferdinand R. Hassler* expedited the opening of the Ports of Charleston and Savannah following the passage of Hurricane Matthew in 2016.

Ocean Acidification and Tropical Atmosphere Ocean Moorings - In 2016, NOAA ship *Ronald H. Brown* conducted Ocean Acidification research along the West Coast of the US. This important oceanographic data is part of a historical data set that monitors trends in the chemical and physical characteristics of ocean water. Serviced 35 moorings of the TAO Array in the equatorial Pacific.









MIC3 Value to NOAA Corps

- Readiness
- Efficiency
- Organizational Excellence





Next Steps

- December 2019 - MIC3 briefs at:
 - Aircraft Safety Conference in Lakeland, FL (40 officers)
 - Marine Operational Leadership Seminar (MOLS) in Kansas City, MO (35 officers)
- FY19Q2 - Establish senior NOAA Corps MIC3 Liaison Officers to states with high concentration of NOAA Corps families and:
 - Maryland
 - Florida
 - Oregon
 - Mississippi
 - Virginia
 - California
 - Hawaii
 - Washington
- FY19Q3: Establish MOU



NOAA

SCIENCE. SERVICE. STEWARDSHIP.



Questions?



On the Web: www.noaa.gov | On Twitter: @NOAA | On Facebook: NOAA