

Education and Military 101

Mary L. Gable

Assistant State Superintendent

Maryland State Department of Education

Division of Student, Family, and School Support/Academic Policy

Commissioner - Maryland

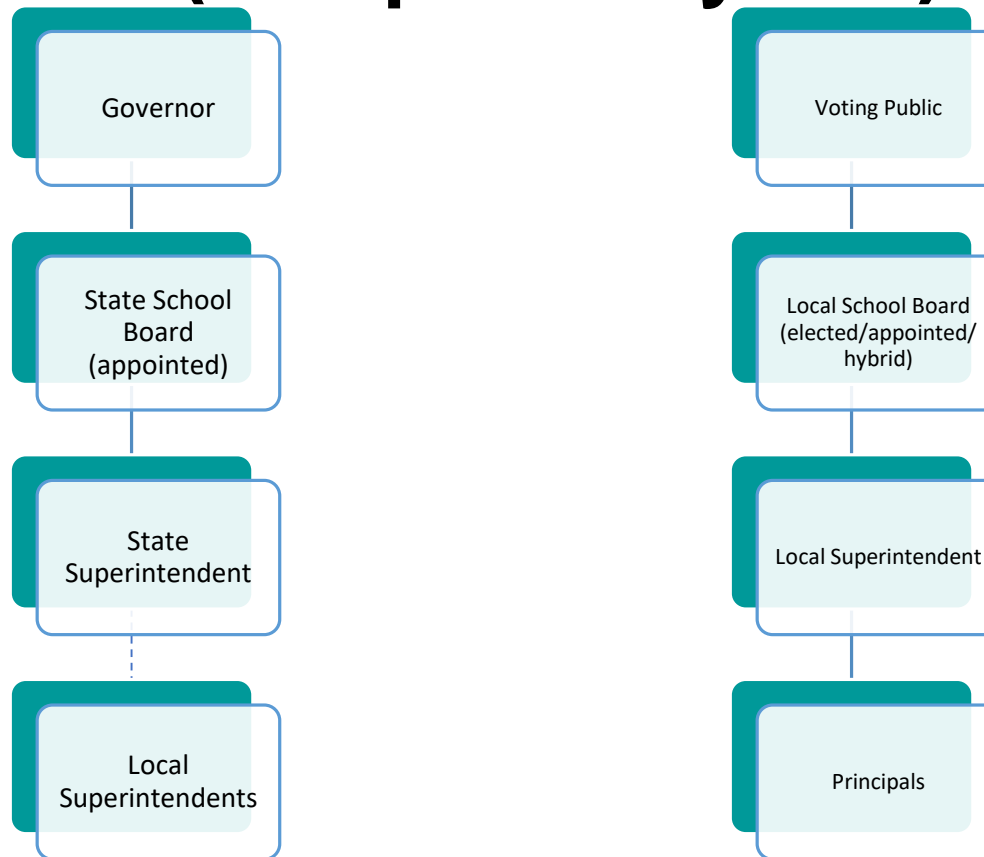


Today's Topics

1. Education Organizational Structure
2. Education as a “right”
3. Federal v. State v. Local
4. Defining Student Groups
5. Advanced Placement v. Honors
6. Graduation Requirements
7. Working with the Education Community



Education Organizational Structure (Sample: Maryland)

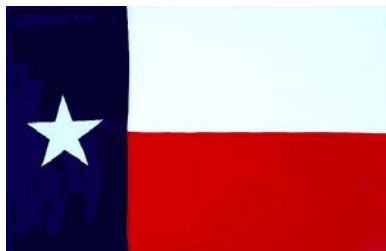


State Organizational Structures



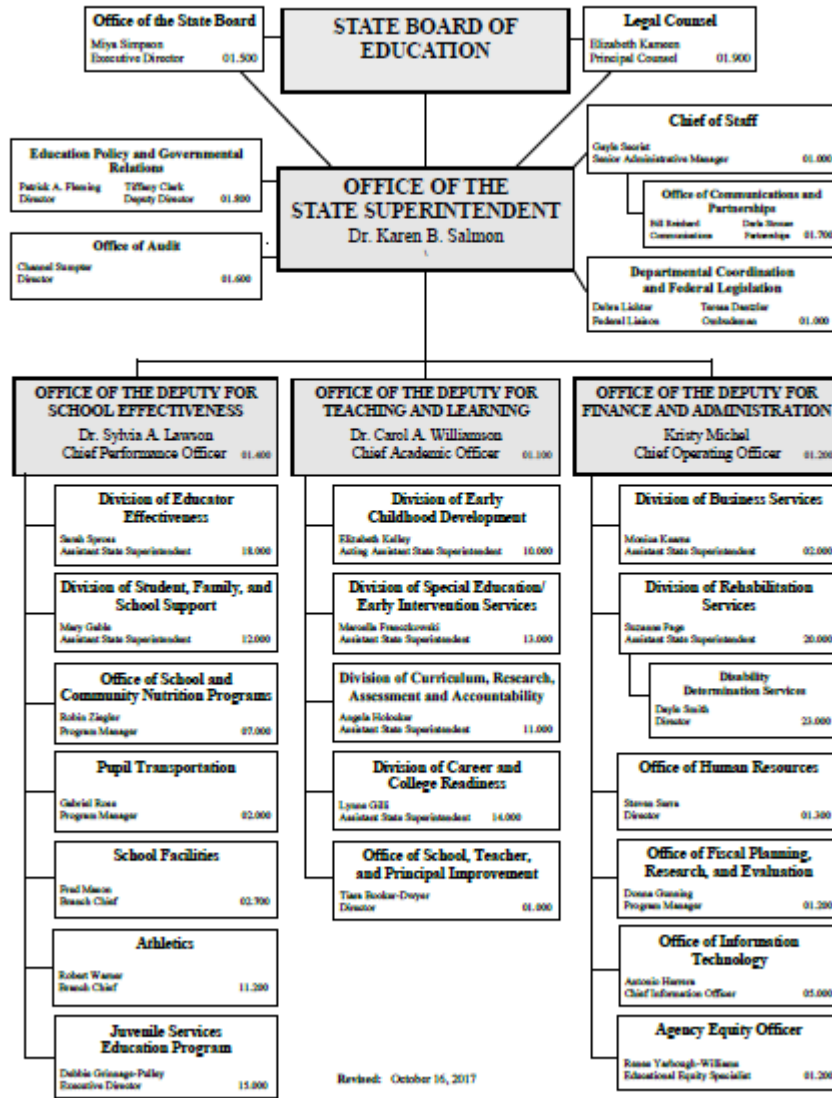
Maryland- 24 Local School
Systems (23 counties, 1 city)

Pennsylvania- 799 Local School
Districts



Texas- 1,247 Independent School
Districts

MARYLAND STATE DEPARTMENT OF EDUCATION



State
Department
of Education
Organizational
Structure
Sample:
Maryland

Roles and Responsibilities

School Board: Often the official educational policy-making body in the state, district, county, etc. The Board is responsible for the direction and operation of the public school system.

Superintendent: The face of a school system. Responsible for the general care and supervision of public education. Generally oversees the department of education (local or state).

Education as a “right”

- International Human Rights Law- Signed by the U.S.
- No specific “right” under the U.S. Constitution
- Supreme Court
- Federal Legislatures indicate a right for all; i.e., ESEA, IDEA, NCLB, ESSA
- Every state in the Union provides for a free, compulsory primary education within their constitutions or statutes.

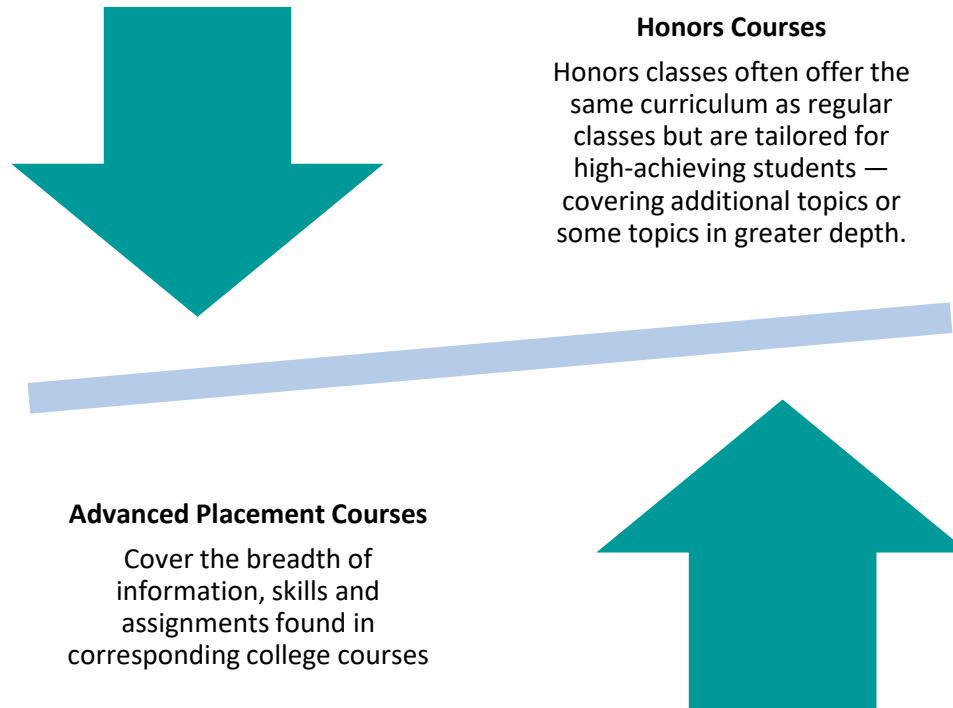
Federal v. State v. Local Autonomy

- Public v. Private Good:
 - Does the public get any benefit from educating its citizens?
- Federal law trumps State law
- In the absence of direct federal law, and in light of state statutes, states generally control much of education
- In some states, local governments oversee much of the details of education
- Follow the money: State and local governments provide approximately 91 percent of funding with the federal government making up the remaining 9 percent.

Defining Student Groups

Racial Groups	Special Groups	Additional Groups
<p>American Indian/Alaskan Native</p> <p>Asian</p> <p>Native Hawaiian or Other Pacific Islander</p> <p>Black/African American</p> <p>Hispanic/Latino of Any Race</p> <p>White</p> <p>Two or More Races</p>	<p>Economically Disadvantaged Students</p> <p>Students with Disabilities</p> <p>Students designated as English Learners</p> <p><u>For reporting only:</u></p> <ul style="list-style-type: none"> - Activity duty military - Homeless - Migrant - Foster 	<p>Defined by State or locals, however for accountability, it must be a consistent definition across the State. Examples may include gifted and talented students</p>

Advanced Placement v. Honors Courses



Kindergarten Entrance Age



MILITARY INTERSTATE
CHILDREN'S COMPACT
COMMISSION

The date by which a student must be five years old in order to attend kindergarten:

Date	States
July 31	HI, MO, NE, ND
August 1	AR, IN
August 15	TN
August 31	AZ, DE, KS, NM, NC, WA
September 1	AL, AK, CA, FL, GA, ID, IL, MD, MN, MS, OK, OR, RI, SC, SD, TX, UT, WV, WI
September 10	MT
September 15	IA, WY
September 30	DC, LA, NV, VA
October 1	CO, KY, MI
October 15	ME
January 1 (of school year)	CT
LEA decides	MA, NH, NH, NY, OH, PA, VT

Graduation Requirements

Defined by each State and/or Local Governing Board

- Generally four units of English/Language Arts
- Generally at least 2, often 4 units of Mathematics
- Most states also require some credits in government, science, arts, world languages, and physical education
- Some states offer multiple pathways and multiple types of diplomas

Advice on Working with the Education Community



Contact your
State
Compact
Commissioner



Contact
your
School
Liaison
Officer



Know the
Interstate
Military
Compact

Some Examples of WHO to contact: (Maryland Examples)

Kindergarten Enrollment- Division of Early Childhood

Graduation Requirements- Division of Policy or Curriculum

Special Education Resources- Division of Special Education/Early Intervention

Career Readiness Opportunities- Division of College and Career Readiness

Achievement Data- Division of Accountability

The Interstate Military Compact

Enrollment

- Educational Records
- Immunizations
- Kindergarten and First Grade Entrance Age

Placement and Attendance

- Course and Educational Program Placement
- Special Education Services
- Placement Flexibility
- Absence Related to Deployment Activities

Graduation

- Waiving courses required for graduation if similar course work has been completed
- Flexibility in accepting state exit or end-of-course exams, national achievement tests, or alternative testing
- Allowing diploma from sending, rather than receiving, school

Contact Info – MD State Commissioner

Mary L. Gable

Assistant State Superintendent

Division of Student, Family, and School Support/Academic Policy

Maryland State Department of Education

200 W. Baltimore Street

Baltimore, MD 21201-2595

Mary.gable@Maryland.gov

ph 410-767-0472

Website: www.marylandpublicschools.org