



**MIC3 WA  
State Council  
Meeting**

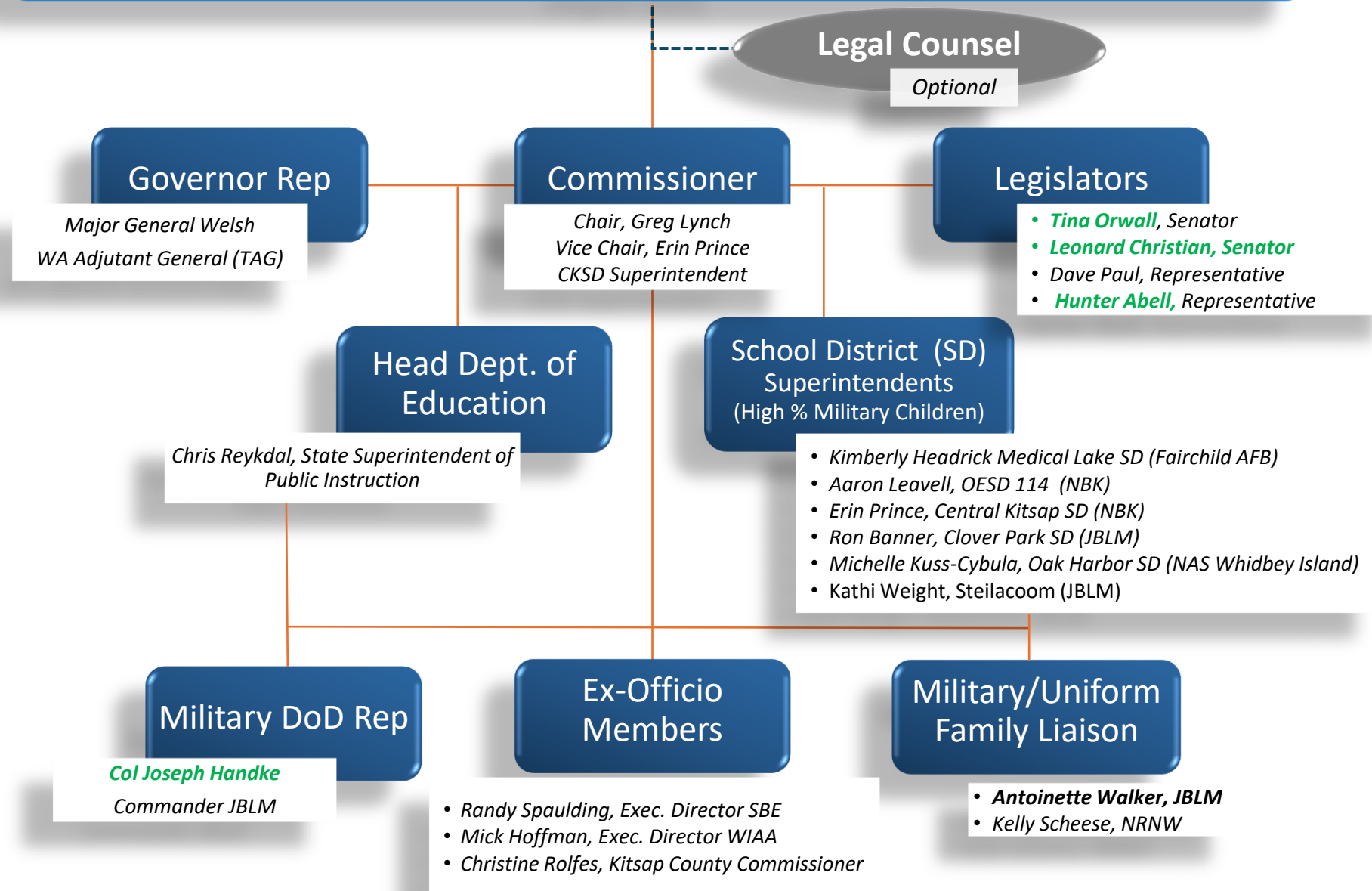
**14 Oct 2025 9:00 –11:00 AM  
Via Zoom**

**Please Enter Your  
Name &  
Organization In Chat**

- **9:00 - 9:05**      **Agenda & MIC3 Overview**      **WA MIC3 Commissioner Greg Lynch**
  
- **9:05 - 9:15**      **Welcome & OSPI Update**      **State Superintendent Chris Reykdal**
  
- **9:15 - 9:30**      **State Council Update & MIC3 National Meeting Preparation**      **WA MIC3 Commissioner Greg Lynch**
  
- **9:30 - 9:45**      **JBLM Update**      **JBLM Garrison Commander Col Joe Handke**
  
- **9:45 - 9:50**      **WA National Guard Update**      **Commander WA Air NG BG Ken Borchers**
  
- **9:50 - 9:55**      **WA State Board of Education (SBE) Update**      **SBE Executive Director Randy Spaulding**
  
- **9:55 - 10:00**      **WA Interscholastic Activities Association (WIAA) Update**      **WIAA Executive Director Mick Hoffman**
  
- **10:00 – 10:30**      **WA MIC3 Compact Lessons Learned & Improvements**
  - **School Liaisons Kelly Scheese and Antoinette Walker**
  - **Dixie Gruenfelder (OSPI)**
  - **Superintendents Prince, Banner, Weight, Leavell, Headrick, Kuss-Cybula**
  
- **10:30 - 10:35**      **Final Q&A and Wrap-up**      **WA MIC3 Commissioner Greg Lynch**

# WA MIC3 State Council

(August 2025)





# MIC3 Dues Revenue National Planning Considerations

- ✓ ***State dues provides 99% of MIC3 revenue***
- ✓ MIC3 does not have taxing authority
- ✓ ***Inflation must be accounted for***
- ✓ Student enrollment is subject to significant fluctuation
- ✓ ***State fiscal processes & Commissioner involvement is variable***
- ✓ Plan for every 2 - 3 years to discuss dues increases with appropriate details
- ✓ ***Commissioner lead planning times for a dues increase are very different***

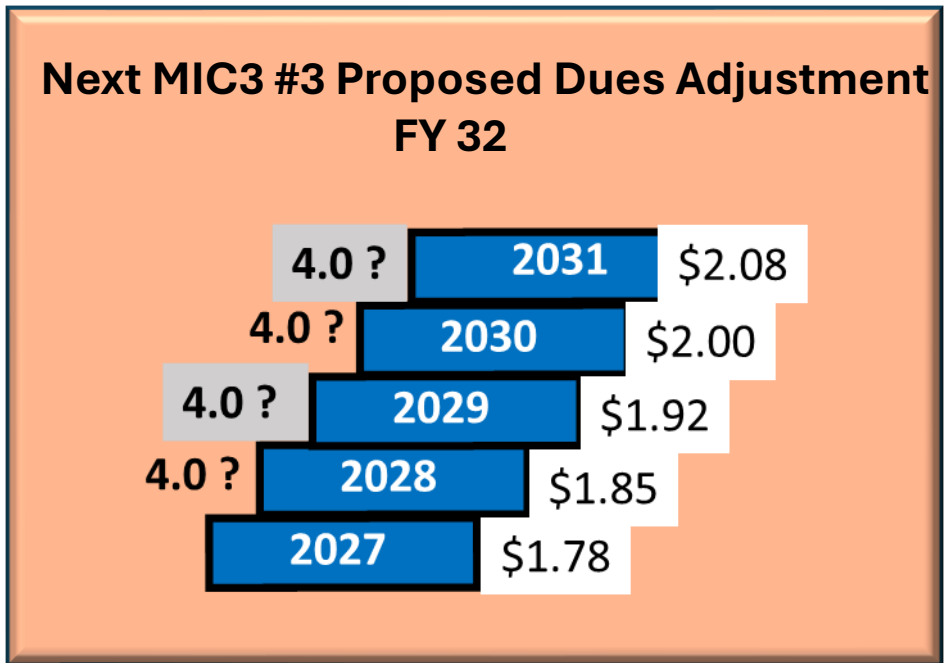
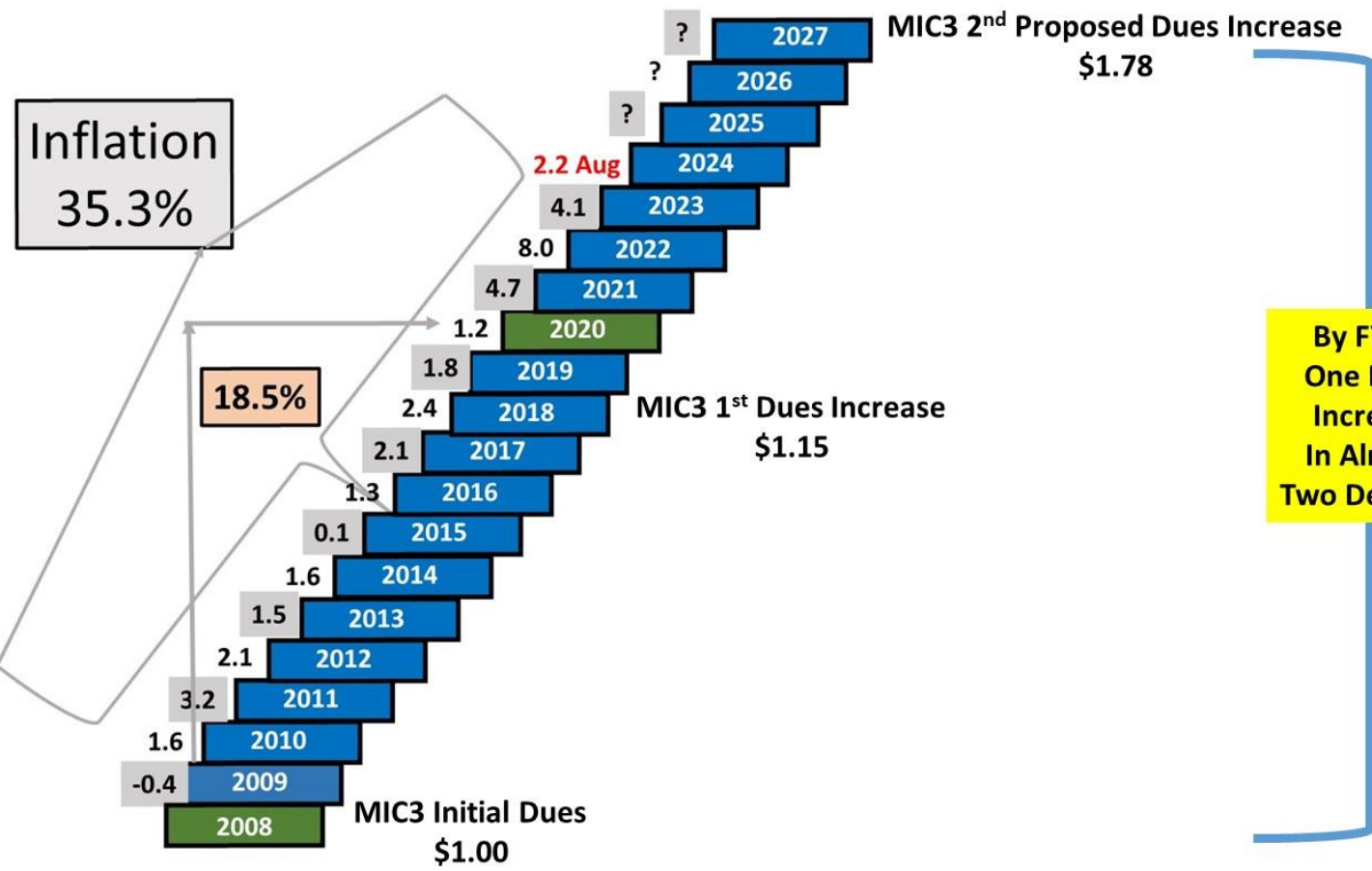




# National MIC3 *Proposed* Dues Increase Inflation Catch-up FY 27 + 4 % Annual Increase FY 28 – FY 31

WA MIC3 Students 24,739	FY 26	FY 27	FY 28	FY 29	FY 30	FY 31
Dues/Student	\$1.15	\$1.78	\$1.85	\$1.92	\$2.00	\$2.08
Total Dues	\$28,450	\$44,036	\$45,767	\$47,498	\$49,478	\$51,457
Total Annual Increase	\$0.00	\$15,586	\$1,731	\$1,731	\$1,980	\$1,979

# MIC3 Inflation & Dues Increases 2027 - 2031



**MIC3 Formal Dues Increase Vote By All Commissioners  
During The National Annual Business Meeting (ABM)  
October, 2025 Indianapolis, Indiana**

Dues Increase  
National Survey  
All Commissioners  
ABM New Mexico  
Fall 2024

**Will Your State  
Support A Dues  
Increase?**  
80% YES  
2% NO  
18% DON'T KNOW

# National Dues Supports



## Member State Benefits

- ✓ *National Office and Administration*
- ✓ State Compact Professional Development
- ✓ State Compact Program Administration and Support
- ✓ *Technical and Legal Advisement*
- ✓ MIC3 National Advocacy and Education
- ✓ **Advertising and Promotion Materials**
- ✓ *Annual Business Meeting – Travel Expenses*

*Interstate Compact on Educational Opportunities for  
Military-Connected Students*  
Results of Implementation Survey

Dixie Grunenfelder, Executive Director of Student Engagement & Support  
Office of Superintendent of Public Instruction  
October 2, 2024

# Military Compact Implementation Survey



The Survey was conducted in Spring 2024.



Participants included district representatives/Superintendents from 24 districts serving large number of military-connected students. Participation rate = 100%



Questions centered on implementation of Compact components.



# Report of Implementation

# Compact Provision #1: Unofficial or “Hand-Carried” Education Records

Level of Implementation	2024 Percentage	2014 Percentage
The provision is being SUBSTANTIALLY implemented.	100%	100%
The provision is currently being PARTIALLY implemented.	0%	0%
The provision is NOT AT All being implemented.	0%	0%

# Compact Provision #2: Kindergarten and First Grade Entrance Age

Level of Implementation	2024 Percentage	2014 Percentage
The provision is being SUBSTANTIALLY implemented.	100%	90%
The provision is currently being PARTIALLY implemented.	0%	10%
The provision is NOT AT All being implemented.	0%	0%

# Compact Provision #3: Course Placement

Level of Implementation	2024 Percentage	2014 Percentage
The provision is being SUBSTANTIALLY implemented.	100%	90%
The provision is currently being PARTIALLY implemented.	0%	10%
The provision is NOT AT All being implemented.	0%	0%

# Compact Provision #4: Placement Flexibility

Level of Implementation	2024 Percentage	2014 Percentage
The provision is being SUBSTANTIALLY implemented.	100%	85%
The provision is currently being PARTIALLY implemented.	0%	15%
The provision is NOT AT All being implemented.	0%	0%

# Compact Provision #5: Absences Related to Deployment

Level of Implementation	2024 Percentage	2014 Percentage
The provision is being SUBSTANTIALLY implemented.	100%	95%
The provision is currently being PARTIALLY implemented.	0%	5%
The provision is NOT AT All being implemented.	0%	0%

# Compact Provision #6: Eligibility for Enrollment

Level of Implementation	2024 Percentage	2014 Percentage
The provision is being SUBSTANTIALLY implemented.	100%	90%
The provision is currently being PARTIALLY implemented.	0%	10%
The provision is NOT AT All being implemented.	0%	0%

# Compact Provision #7: Waiver Requirements of #1 - Course Waivers

Level of Implementation	2024 Percentage	2014 Percentage
The provision is being SUBSTANTIALLY implemented.	100%	90%
The provision is currently being PARTIALLY implemented.	0%	10%
The provision is NOT AT All being implemented.	0%	0%

# Compact Provision #8: Waiver Requirements #2 – Alternatives to Graduation

Level of Implementation	2024 Percentage	2014 Percentage
The provision is being SUBSTANTIALLY implemented.	100%	95%
The provision is currently being PARTIALLY implemented.	0%	5%
The provision is NOT AT All being implemented.	0%	0%

# Compact Provision #9: Transfer During Senior Year

Level of Implementation	2024 Percentage	2014 Percentage
The provision is being SUBSTANTIALLY implemented.	92%	95%
The provision is currently being PARTIALLY implemented.	8%	5%
The provision is NOT AT All being implemented.	0%	0%

# Compact Provision #10: Official Education Records/Transcripts

Level of Implementation	2024 Percentage	2014 Percentage
The provision is being SUBSTANTIALLY implemented.	100%	90%
The provision is currently being PARTIALLY implemented.	0%	10%
The provision is NOT AT All being implemented.	0%	0%

# Compact Provision #11: Immunizations

Level of Implementation	2024 Percentage	2014 Percentage
The provision is being SUBSTANTIALLY implemented.	100%	85%
The provision is currently being PARTIALLY implemented.	0%	15%
The provision is NOT AT All being implemented.	0%	0%

# Compact Provision #12: Education Program Placement

Level of Implementation	2024 Percentage	2014 Percentage
The provision is being SUBSTANTIALLY implemented.	100%	95%
The provision is currently being PARTIALLY implemented.	0%	5%
The provision is NOT AT All being implemented.	0%	0%

# Themes of Inquiries to OSPI

Kindergarten  
Enrollment

Pre-enrollment in  
Special Services

Graduation  
Requirements